

Light efficiency:

95 Lumen/Watt

Light quality:

CRI: 92.8

Color temperature:

3039 K

Output: 2544 lm

Peak: 5337 cd

Power: 26.7 W

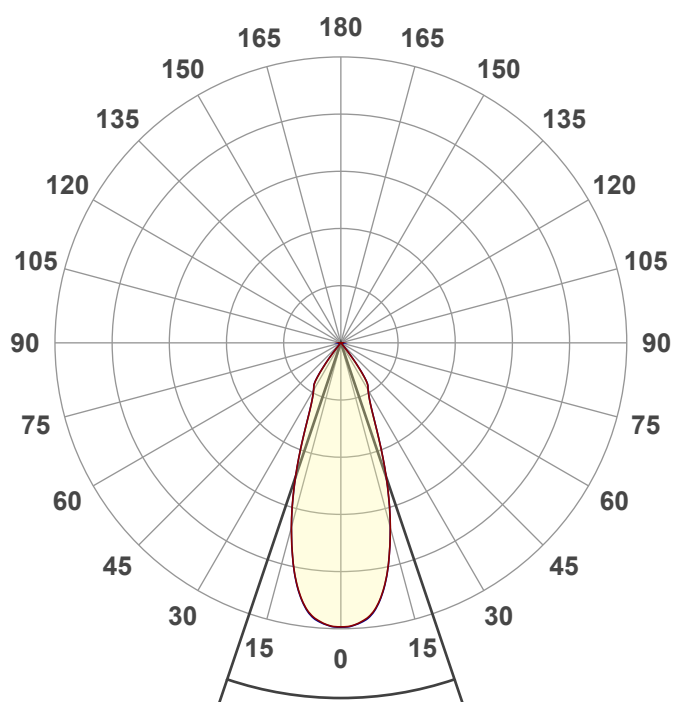
PF: 0.99



EXT-6D-30LM-30K-90-35D

Date and time:

11/14/2023 11:50:54 AM



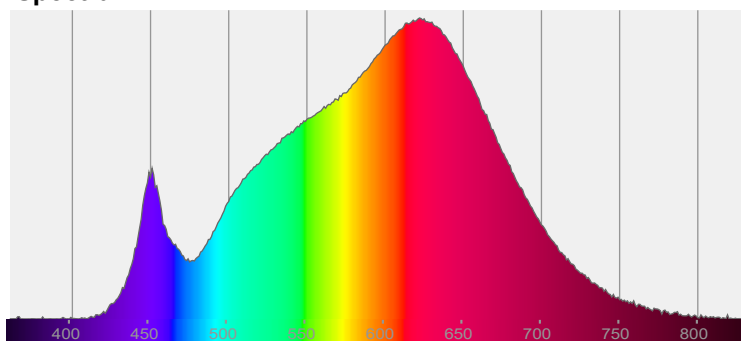
Beam angle

37.3°

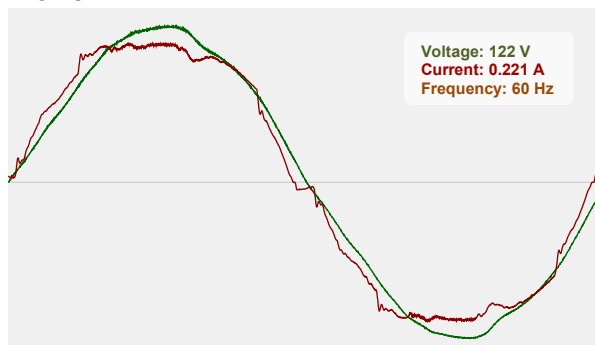


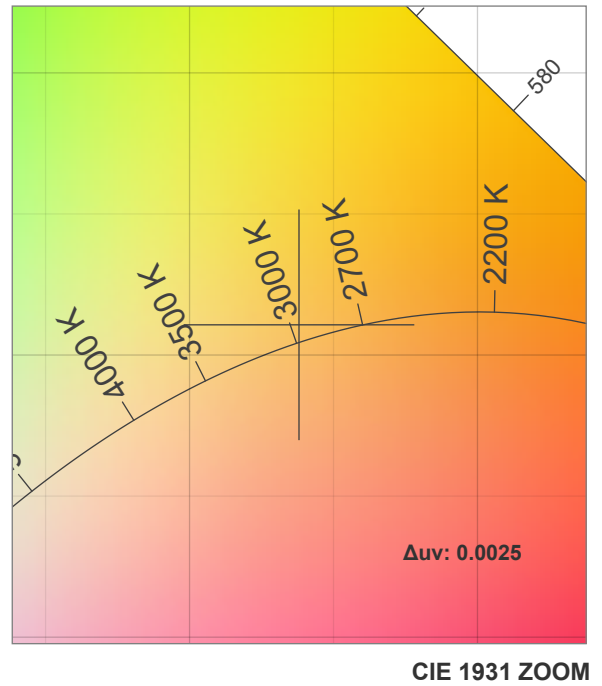
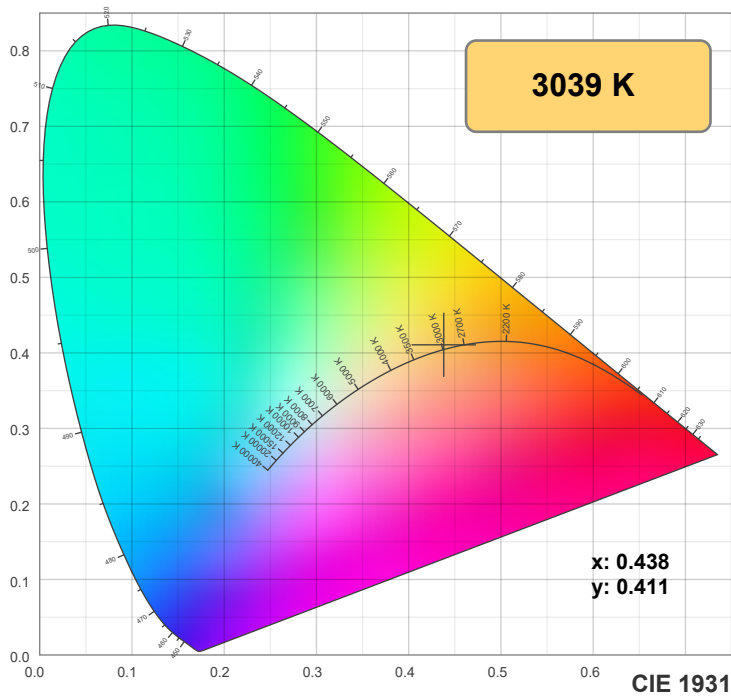
CIE 1931
x: 0.438
y: 0.411

Spectra

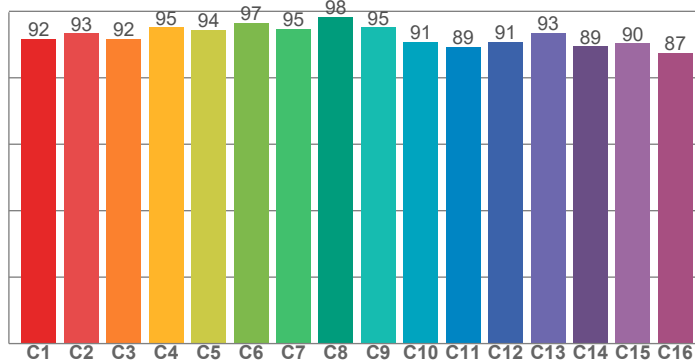


Power

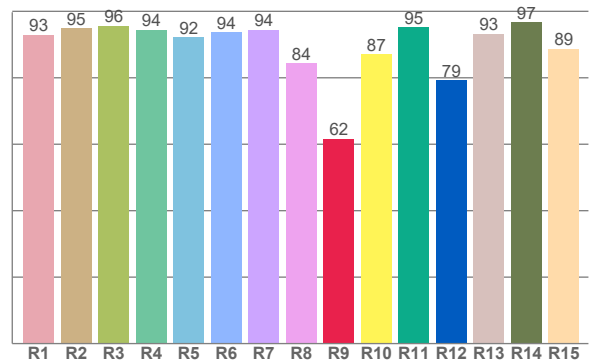




TM30: 92.7



CRI: 92.8 (R1-R8)



CRI R values, only R1-R8 are used to calculate final CRI value

R1	R2	R3	R4	R5	R6	R7	R8	R9	R10	R11	R12	R13	R14	R15
93.0	94.8	95.6	94.4	92.2	93.7	94.5	84.4	61.7	87.0	95.2	79.3	93.3	96.8	88.7

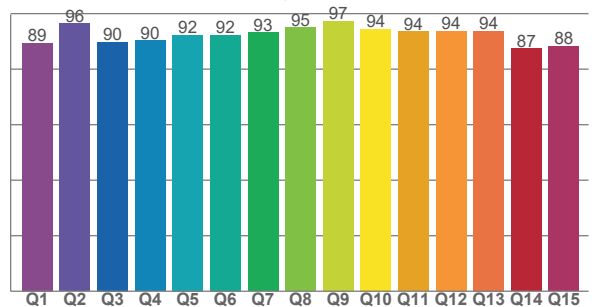
TM30 C values, 16 binned values out of total of 99 C values

C1	C2	C3	C4	C5	C6	C7	C8	C9	C10	C11	C12	C13	C14	C15	C16
91.7	93.4	91.6	95.2	94.5	96.6	94.8	98.4	95.1	90.7	89.3	90.8	93.4	89.5	90.4	87.4

CQS Q values

Q1	Q2	Q3	Q4	Q5	Q6	Q7	Q8	Q9	Q10	Q11	Q12	Q13	Q14	Q15
89.5	96.4	89.7	90.2	92.3	92.3	93.1	95.0	97.3	94.4	93.5	93.8	93.8	87.5	88.2

CQS: 91.8



Color parameters

Color temperature	Color rendering index	Red component	Color fidelity	Color gamut	Color quality scale	Color coordinate cie 1931	Color coordinate cie 1931	Color coordinate	Color coordinate	Color deviation from black body
CCT	CRI	CRI R9	TM30 Rf	TM30 Rg	CQS	x	y	u	v	Δuv
3039 K	92.8	61.7	92.7	99.1	91.8	0.438	0.411	0.248	0.349	0.0025

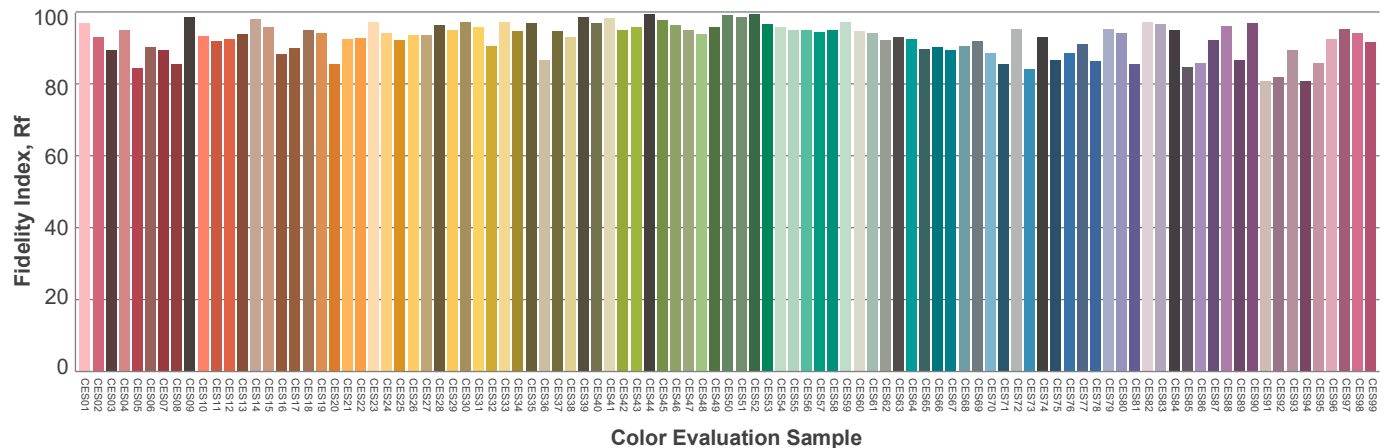
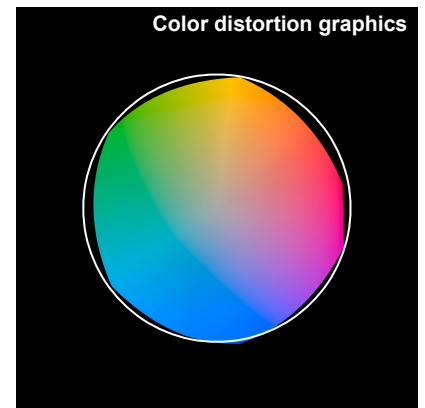
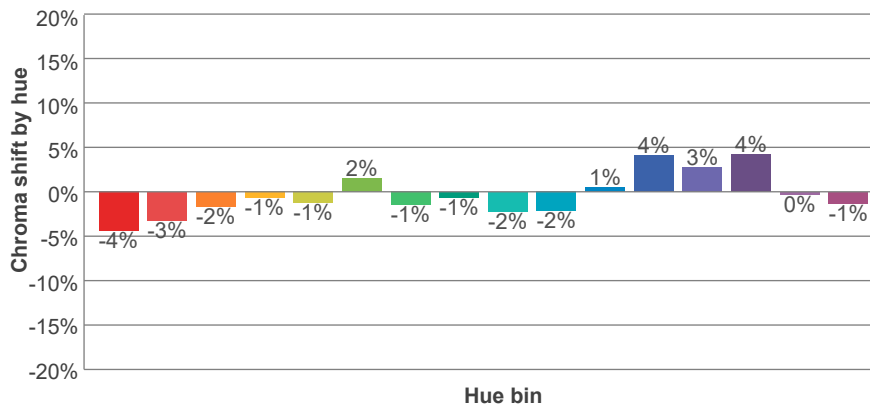
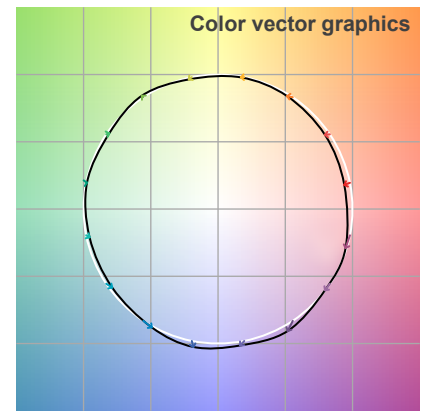
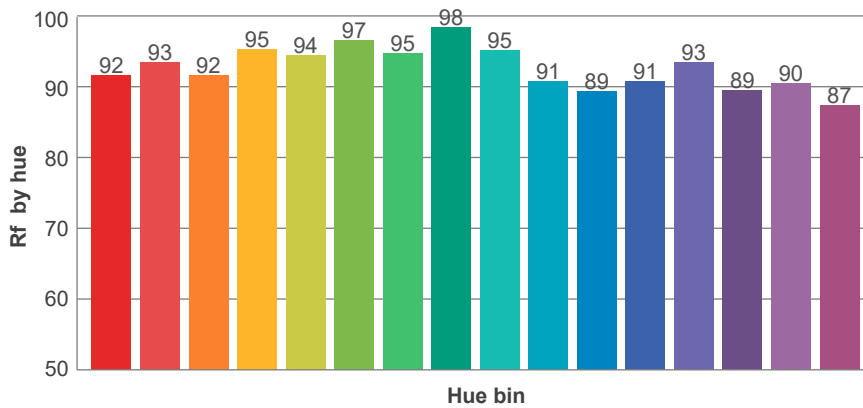
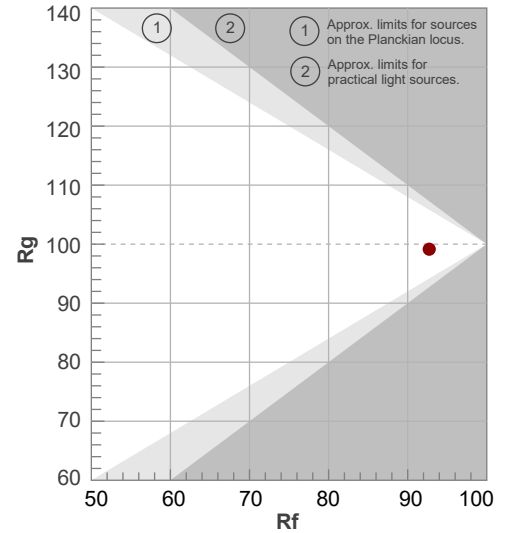
Rf 92.7

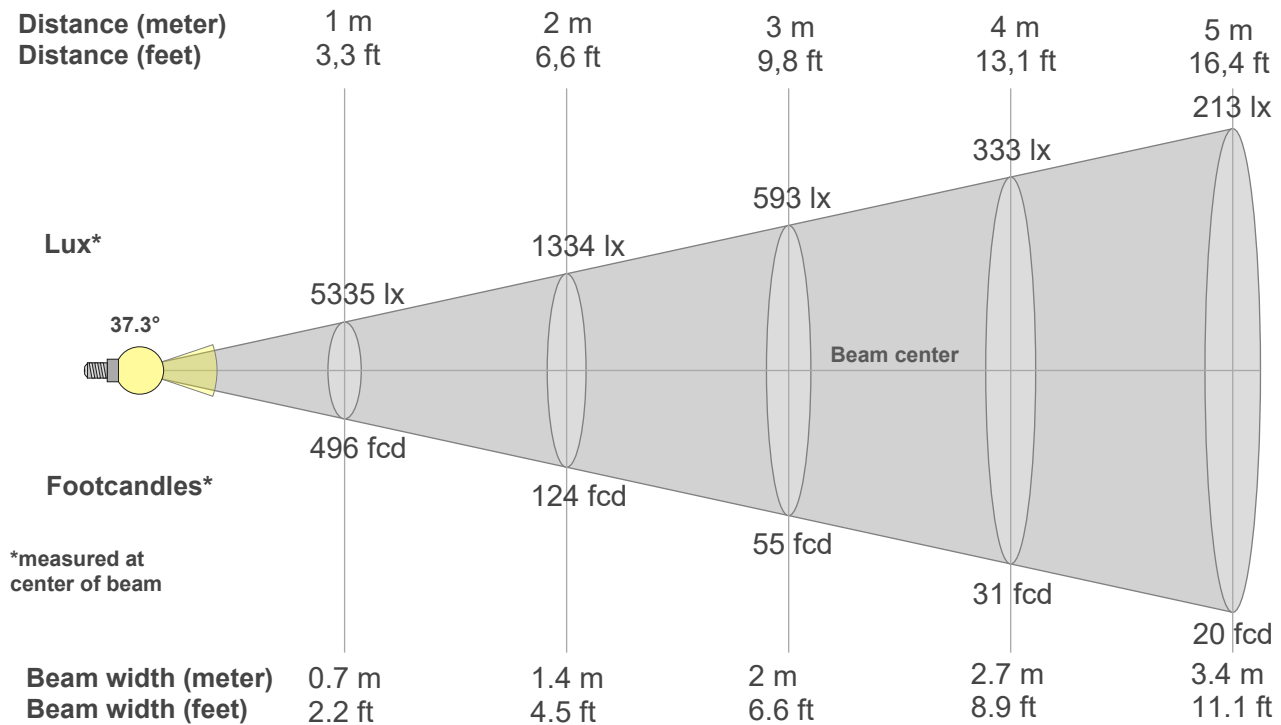
Fidelity index Rf

Rg 99.1

Gammut index Rg

Hue Bin	R _f	Graphic shifts (%)	
		Chroma	Hue
1	92	-4%	-1%
2	93	-3%	2%
3	92	-2%	4%
4	95	-1%	2%
5	94	-1%	3%
6	97	2%	0%
7	95	-1%	-2%
8	98	-1%	0%
9	95	-2%	2%
10	91	-2%	5%
11	89	1%	8%
12	91	4%	2%
13	93	3%	-4%
14	89	4%	-7%
15	90	0%	-6%
16	87	-1%	-10%





Beam intensities from 1-20m

1m	2m	3m	4m	5m	6m	7m	8m	9m	10m	11m	12m	13m	14m	15m	16m	17m	18m	19m	20m
3.3ft	6.6ft	9.8ft	13.1ft	16.4ft	19.7ft	23ft	26.2ft	29.5ft	32.8ft	36.1ft	39.4ft	42.7ft	45.9ft	49.2ft	52.5ft	55.8ft	59.1ft	62.3ft	65.6ft
5335lx	1334lx	593lx	333lx	213lx	148lx	109lx	83lx	66lx	53lx	44lx	37lx	32lx	27lx	24lx	21lx	18lx	16lx	15lx	13lx
495.6fc	123.9fc	55.1fcd	31fcd	19.8fcd	13.8fcd	10.1fcd	7.7fcd	6.1fcd	5fcd	4.1fcd	3.4fcd	2.9fcd	2.5fcd	2.2fcd	1.9fcd	1.7fcd	1.5fcd	1.4fcd	1.2fcd

Intensities in 0° c-plane

0°	2°	4°	6°	8°	10°	12°	14°	16°	18°	20°	22°	24°	26°	28°	30°	32°	34°	36°	38°
5335	5315	5254	5150	4954	4661	4272	3820	3344	2837	2329	1858	1496	1261	1122	1025	951	819	549	264
100%	100%	98%	97%	93%	87%	80%	72%	63%	53%	44%	35%	28%	24%	21%	19%	18%	15%	10%	5%

Intensities in 90° c-plane

0°	2°	4°	6°	8°	10°	12°	14°	16°	18°	20°	22°	24°	26°	28°	30°	32°	34°	36°	38°
5335	5320	5266	5166	4966	4672	4273	3813	3334	2823	2317	1854	1493	1259	1121	1026	954	823	557	261
100%	100%	99%	97%	93%	88%	80%	71%	62%	53%	43%	35%	28%	24%	21%	19%	18%	15%	10%	5%

Intensities in 180° c-plane

0°	2°	4°	6°	8°	10°	12°	14°	16°	18°	20°	22°	24°	26°	28°	30°	32°	34°	36°	38°
5335	5315	5254	5150	4954	4661	4272	3820	3344	2837	2329	1858	1496	1261	1122	1025	951	819	549	264
100%	100%	98%	97%	93%	87%	80%	72%	63%	53%	44%	35%	28%	24%	21%	19%	18%	15%	10%	5%

Intensities in 270° c-plane

0°	2°	4°	6°	8°	10°	12°	14°	16°	18°	20°	22°	24°	26°	28°	30°	32°	34°	36°	38°
5335	5320	5266	5166	4966	4672	4273	3813	3334	2823	2317	1854	1493	1259	1121	1026	954	823	557	261
100%	100%	99%	97%	93%	88%	80%	71%	62%	53%	43%	35%	28%	24%	21%	19%	18%	15%	10%	5%

Beam angle 50°	Field angle 10°	Cutoff angle 2,5°	Intensity ratio in 120° cone	Intensity ratio in 90° cone
37.3°	72.3°	78.2°	99.6%	98.7%